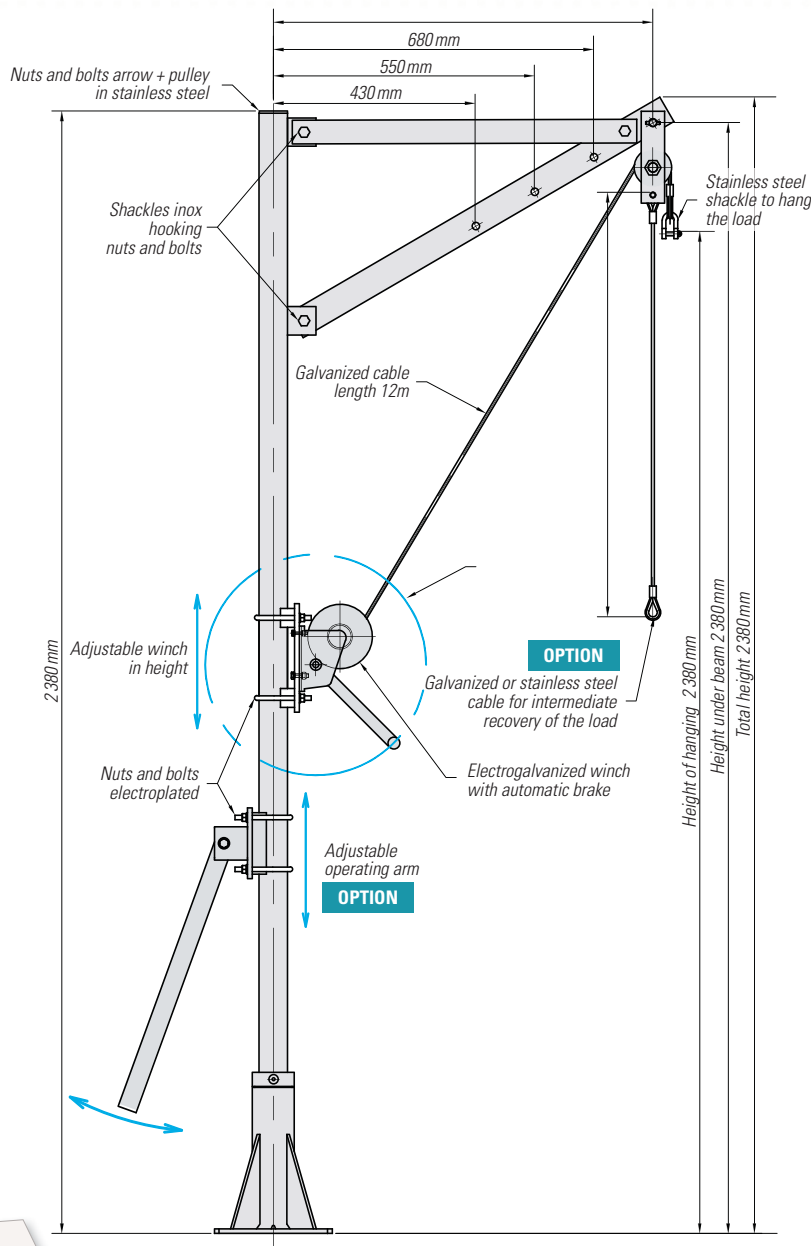


DC 150 / 0.8

STEEL DAVIT CRANE 150 KG



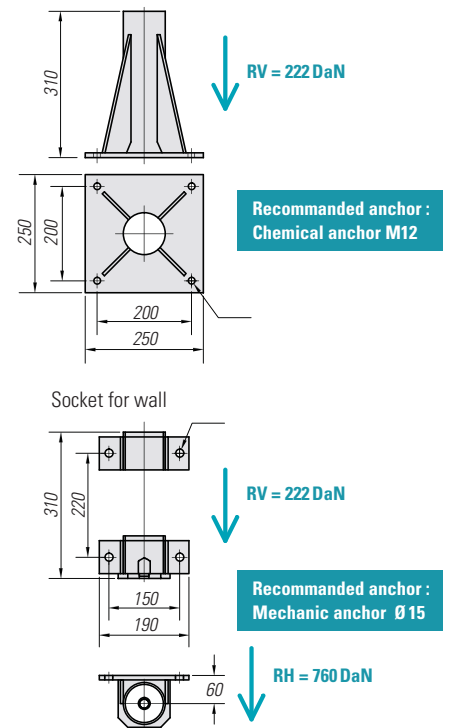
Measure in mm

Span	430	550	680	800
HA	1906	1979	2052	2125
HSF	2130	2210	2282	2355

Weight in Kg

Pillar	14
Deflection	9
Winch	13
Operating arm	6
Chemical socket	10
Wall socket	5

Weight in Kg



Description

- Galvanized finish/socket galvanized and painted.
- SWL = 150 DaN.
- Adjustable span from 430 mm to 800 mm.
- Height of hooking at the shackle = 2125 mm.
- Manual winch electrogalvanized:
 - automatic load brake,
 - length per turn of the handle = 39 mm,
 - rollment capacity = 23 m / Ø cable = 4 mm,
 - crank force = 72 N.
- Stainless steel pulley mounted on bearing.
- Galvanized cable length 12 m.
- Stainless steel shackle for long load attachment. 12 m.
- Maximum moment = 168 DaN.
- Reaction per anchor = 374 DaN.

OPTIONS

Operating arm.
Bolts winch and operating arms Stainless steel.
Cable Stainless steel.
Galvanized or stainless steel return sling.

Anchors.
RAL special paint for stainless steel.
Winches 100 % stainless steel.

Simplified version without winch with suspension for:
- manual hoist,
- electric hoist,
- pneumatic hoist.